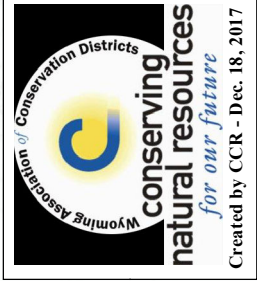
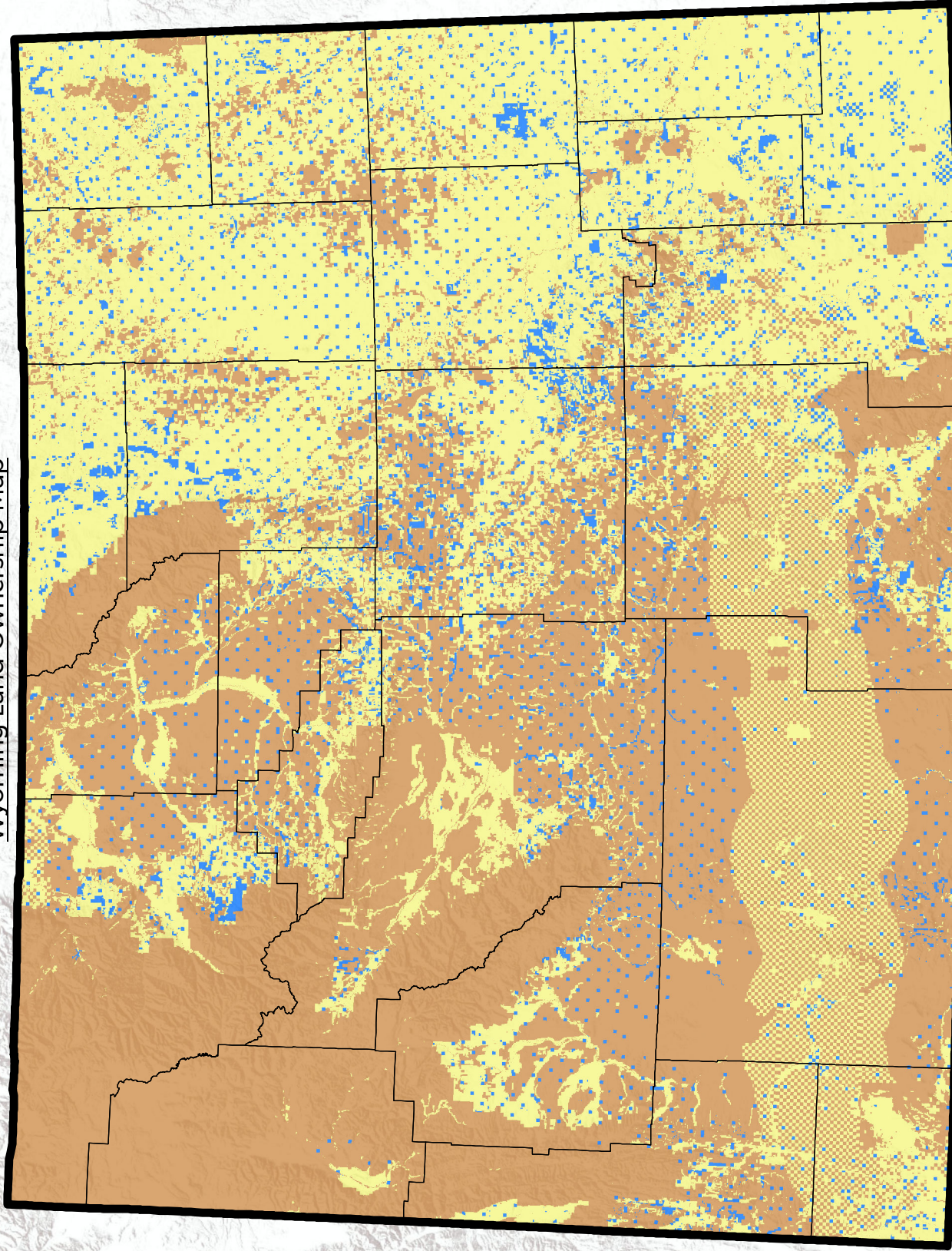


Wyoming Land Ownership Map



Legend

-  Counties
-  Wyoming
-  Federal, Other State, Local Government
-  State Trust Land
-  Private Ownership



Source: Surface Ownership information obtained from 2014 Bureau of Land Management dataset.



97,818 SQUARE MILES OF TRAILS LESS TRAVELED

The memories are enough reason to make your way across Wyoming. But a few mementos are a nice perk. Explore Mother Nature's most breathtaking creations, like Yellowstone National Park, Devils Tower, and the Grand Teton. Along the way, pick up collectible stickers that pay tribute to Wyoming's many areas of rugged majesty and possibility.

KEY

- SALT TO STONE ROUTE
- ROCKIES TO TETONS ROUTE
- PARK TO PARK ROUTE
- BLACK TO YELLOW ROUTE
- ★ STICKERS LOCATED HERE
- ★ NATIONAL PARK
- ★ STATE PARK
- MONUMENT/LANDMARK
- CITY/TOWN
- CALIFORNIA, MORMON PIONEER, OREGON TRAIL, AND PONY EXPRESS
- PARK BOUNDARY

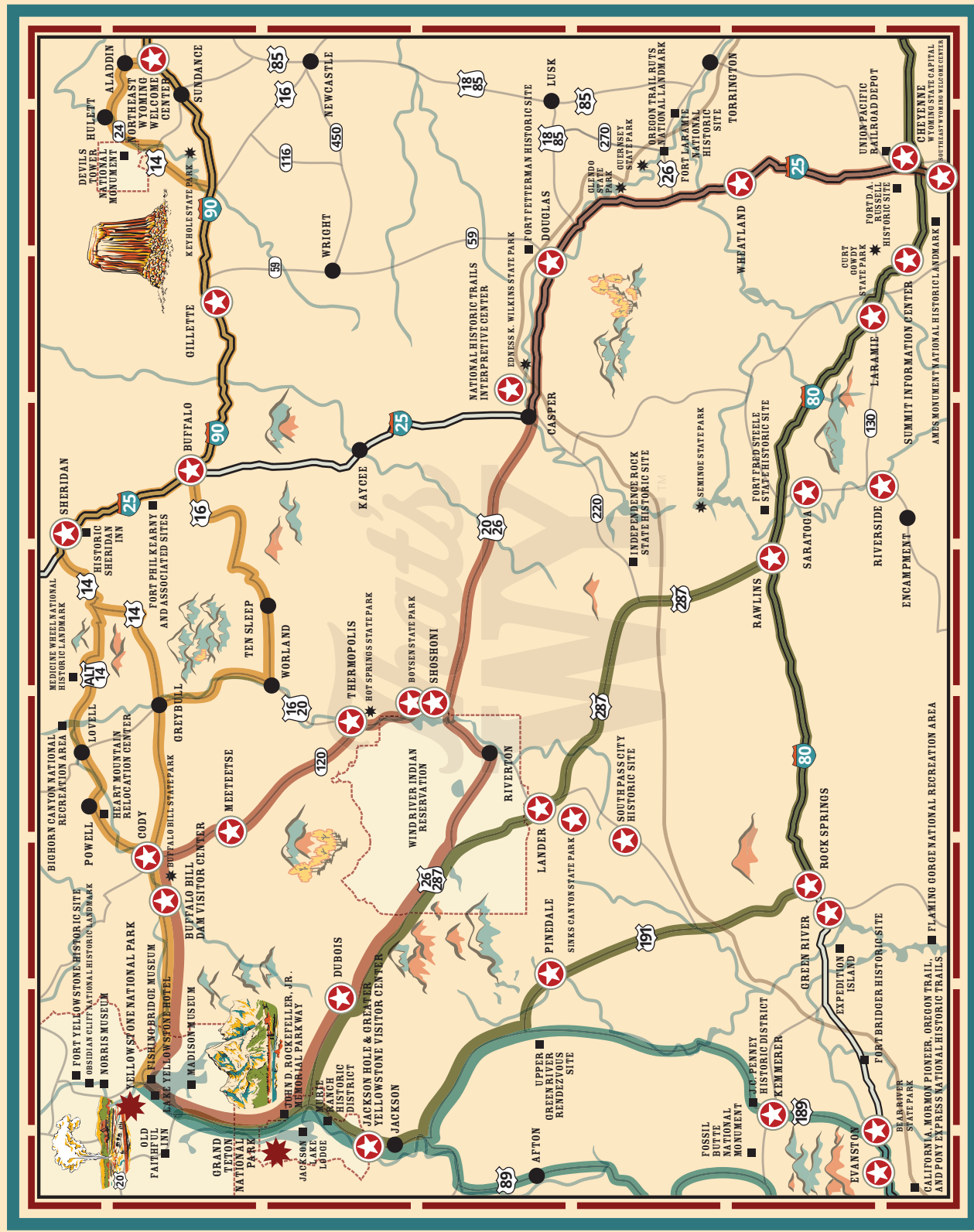


TRACK YOUR TRIP

#That'sWY

TravelWyoming.com/maps

Grade 3 - Outdoor Recreation & Tourism - Lesson 1



EVERY ROAD LEADS TO ADVENTURE. AND STICKERS.

Collect your set of Great American Roadtrip Stickers at Wyoming Visitor Centers throughout the state.

Visit TravelWyoming.com/maps for the sticker distribution center locations.



#SaltToStone



SALT TO STONE

Outdoor aficionados, amateur paleontologists, wildlife lovers and history buffs flock to the Salt to Stone region. From the Great Salt Lake to Yellowstone National Park, those who explore these starkly beautiful landscapes will find natural treasures such as Fossil Butte National Monument, Kilpecker Sand Dunes, Boar's Tusk and Jackson Lake. All around the region, towns immersed in history welcome you on your way to epic outdoor activities, including hiking, biking, kayaking, boating, skiing and snowmobiling.



#RockiesToTetons



ROCKIES TO TETONS

Choose a route of epic scale along the eastern slope of the Continental Divide. The Rockies to Teton region brims with a wide array of only-in-Wyoming experiences. Home to the Western-rooted capital city of Cheyenne, the Wind River Indian Reservation; and the snowy, Medicine Bow, Seminoe and Wind River mountain ranges, the area attracts both culture vultures and adventure seekers.



#ParkToPark



PARK TO PARK

Follow the path of those who came before us on your way to Yellowstone. Stretch your legs on the historic trails winding through the heart of Wyoming and learn about the dinosaurs that trekked them more than 100 million years ago in the Bighorn Basin. Scenery straight out of an adventure magazine and plenty of welcoming towns make the Park to Park region ideal for a variety of getaways. From rugged backcountry escapes, to relaxing hot springs retreats.



#BlackToYellow



BLACK TO YELLOW

Begin the adventure long before Yellowstone National Park's east entrance with detours through Wyoming's Black Hills National Forest, Devils Tower National Monument and Bighorn Canyon National Recreation Area. With little traffic, fewer people and wide-open skies, the black to yellow region will redefine your concept of fresh air. Dotted the spectacular landscape, you'll find charming towns where 19th-century hotels, shops and restaurants still welcome travelers and outdoor recreation abounds. Acres of public land, sagebrush plains and rolling hills set the scene for trips ranging from family outings to solitary adventures.



History of Public Lands in Wyoming

Wyoming has a variety of public lands for everyone to enjoy. In fact, over half of the land of our state is public land. Public land is land owned by a government. This land includes our national and state parks, monuments, national forests, wilderness areas, some waterways, and wildlife preserves.

It is important for stewards to keep these destinations cared for, so all people can enjoy the recreation opportunities that are available. Private land owners, along with state and federal agencies, such as the Wyoming Game and Fish Department, U.S. Forest Service, and Bureau of Land Management (BLM), work to provide balance in conserving resources on public lands for future generations.

Tourism and recreation create a variety of jobs and income for communities in our state. These fields employ more people in our state than you might realize. Outfitters, guides, hotel workers, and even fast food servers support this important industry.

Wyoming is unique for being the first of many events. The first national park, first national forest, and the first national monument. Wyoming's diversity draws scientists and tourists alike. Resources such as wildlife, forests, and waterways draw even more people to the state. They enjoy riding and hiking trails, fishing, hunting trophy game, and more! Because Wyoming is so unique, the citizens have been balancing the needs to conserve these resources and allow for public enjoyment and use.



Vedauwoo Recreation Area



Jackson Lake and Grand Teton National Park



Bison in Yellowstone National Park

Plants

Discussion Questions:

- 1) What do you notice about the plants in your group?
- 2) Are the plants all the same?
- 3) What are some characteristics of the plants in your group?



wildlife

Discussion Questions:

- 1) What do you notice about the animals in your group?
- 2) Are the animals all the same?
- 3) What are some characteristics of the animals in your group?



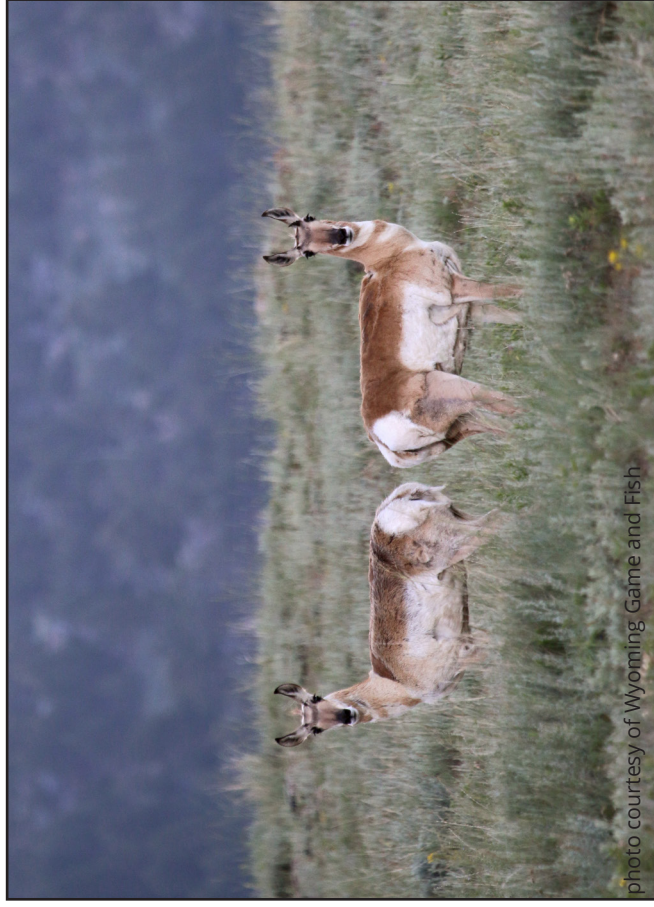
Recreation

Discussion Questions:

- 1) What do you notice about the recreational activities in your group?
- 2) Are the activities all the same?
- 3) What are some characteristics of this activity?



Picture Cards



© 2017 Wyoming Agriculture in the Classroom Materials



Picture Cards

Discussion Questions

- What do you notice about the animals in your group? Are the animals all the same? What are some characteristics of the animals in your group?

Discussion Questions

- What do you notice about the animals in your group? Are the animals all the same? What are some characteristics of the animals in your group?

Discussion Questions

- What do you notice about the animals in your group? Are the animals all the same? What are some characteristics of the animals in your group?

Discussion Questions

- What do you notice about the animals in your group? Are the animals all the same? What are some characteristics of the animals in your group?



Picture Cards



© 2017 Wyoming Agriculture in the Classroom Materials



Picture Cards

Discussion Questions

- What do you notice about the animals in your group? Are the animals all the same? What are some characteristics of the animals in your group?

Discussion Questions

- What do you notice about the animals in your group? Are the animals all the same? What are some characteristics of the animals in your group?

Discussion Questions

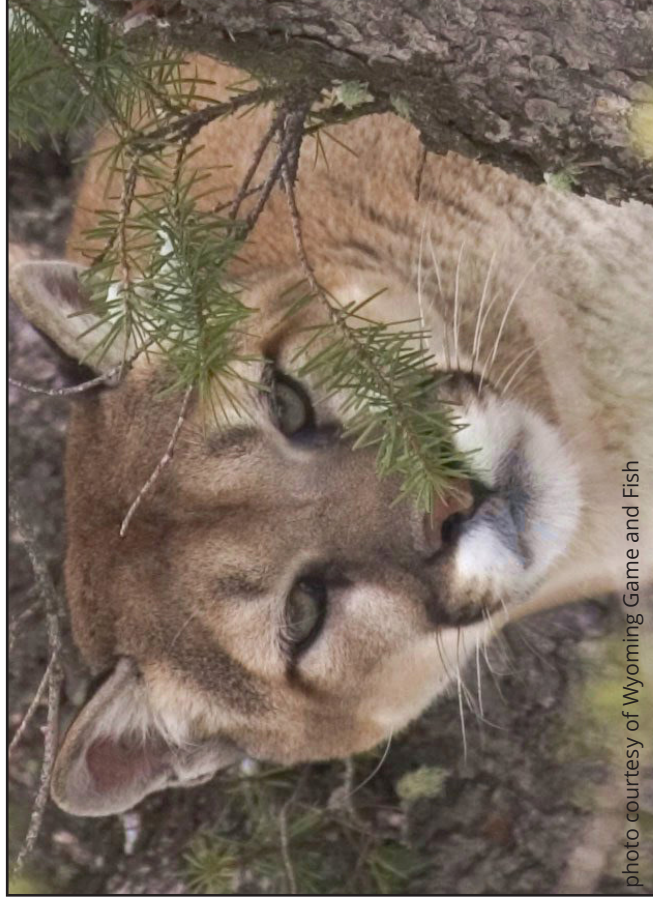
- What do you notice about the animals in your group? Are the animals all the same? What are some characteristics of the animals in your group?

Discussion Questions

- What do you notice about the animals in your group? Are the animals all the same? What are some characteristics of the animals in your group?



Picture Cards



© 2017 Wyoming Agriculture in the Classroom Materials



Picture Cards

Discussion Questions

- What do you notice about the animals in your group? Are the animals all the same? What are some characteristics of the animals in your group?

Discussion Questions

- What do you notice about the animals in your group? Are the animals all the same? What are some characteristics of the animals in your group?

Discussion Questions

- What do you notice about the plants in your group? Are the plants all the same? What are some characteristics of the plants in your group?

Discussion Questions

- What do you notice about the plants in your group? Are the plants all the same? What are some characteristics of the plants in your group?



Picture Cards



photo by Stephanie Russell

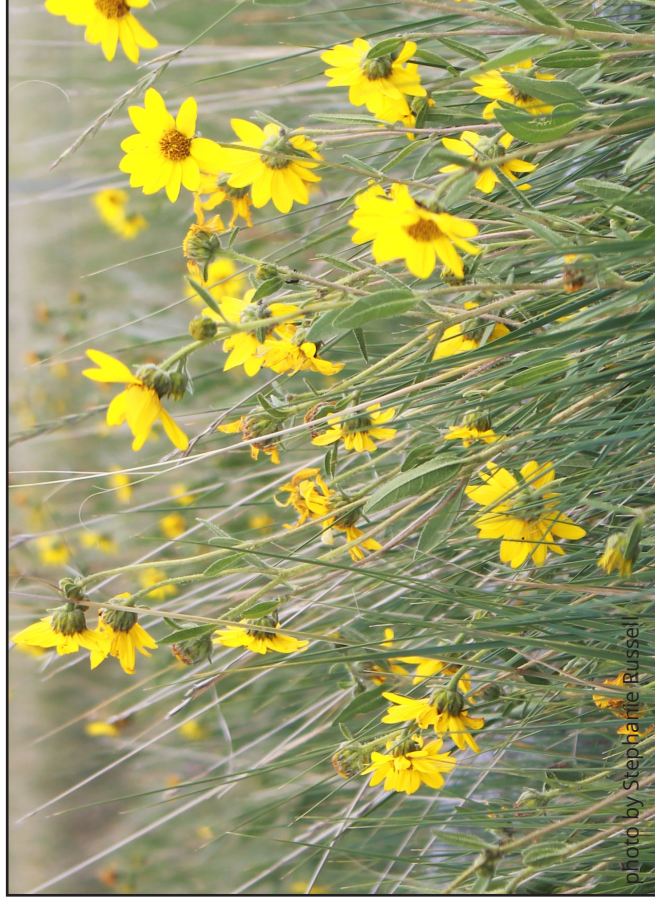


photo by Stephanie Russell



photo by Stephanie Russell

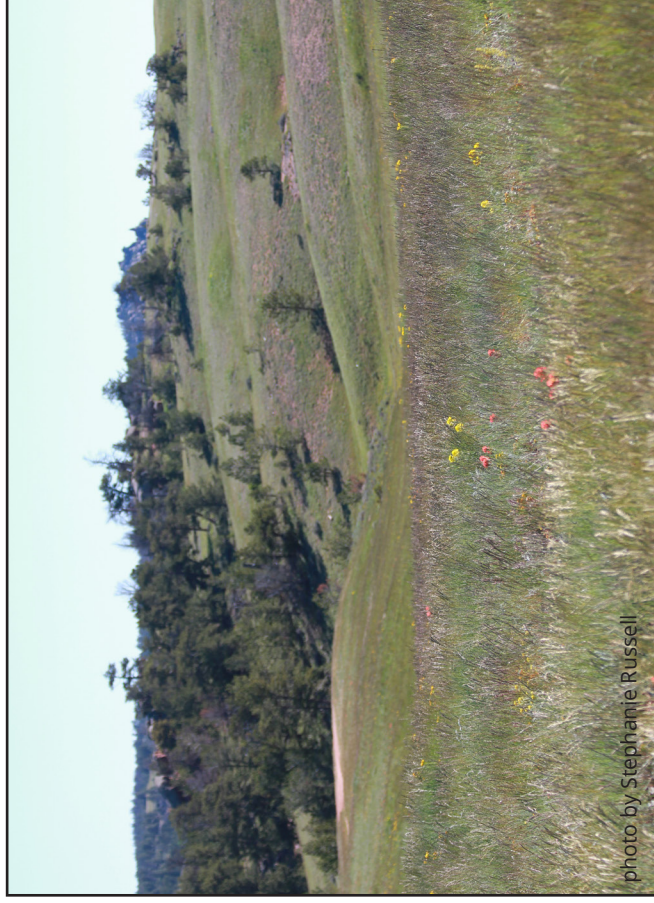


photo by Stephanie Russell

© 2017 Wyoming Agriculture in the Classroom Materials



Picture Cards

Discussion Questions

- What do you notice about the plants in your group? Are the plants all the same? What are some characteristics of the plants in your group?

Discussion Questions

- What do you notice about the plants in your group? Are the plants all the same? What are some characteristics of the plants in your group?

Discussion Questions

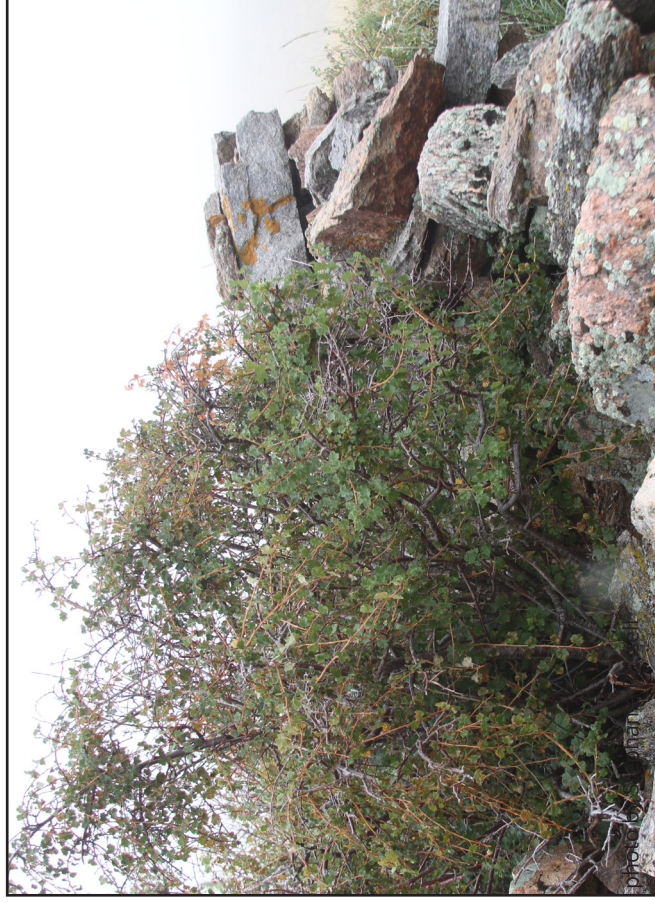
- What do you notice about the plants in your group? Are the plants all the same? What are some characteristics of the plants in your group?

Discussion Questions

- What do you notice about the plants in your group? Are the plants all the same? What are some characteristics of the plants in your group?



Picture Cards



© 2017 Wyoming Agriculture in the Classroom Materials



Picture Cards

Discussion Questions

- What do you notice about the plants in your group? Are the plants all the same? What are some characteristics of the plants in your group?

Discussion Questions

- What do you notice about the plants in your group? Are the plants all the same? What are some characteristics of the plants in your group?

Discussion Questions

- What do you notice about the plants in your group? Are the plants all the same? What are some characteristics of the plants in your group?

Discussion Questions

- What do you notice about the plants in your group? Are the plants all the same? What are some characteristics of the plants in your group?



Picture Cards



photo courtesy of National Park Service



photo by Patty Small



photo courtesy of Wyoming State Parks



photo courtesy of Wyoming State Parks

© 2017 Wyoming Agriculture in the Classroom Materials



Picture Cards

Discussion Questions

- What do you notice about the recreational activities in your group? Are the activities all the same? What are some characteristics of this activity?

Discussion Questions

- What do you notice about the recreational activities in your group? Are the activities all the same? What are some characteristics of this activity?

Discussion Questions

- What do you notice about the recreational activities in your group? Are the activities all the same? What are some characteristics of this activity?

Discussion Questions

- What do you notice about the recreational activities in your group? Are the activities all the same? What are some characteristics of this activity?



Picture Cards



photo by Janet Wragge



photo by Stephanie Russell



photo by Stephanie Russell



photo by Stephanie Russell



© 2017 Wyoming Agriculture in the Classroom Materials

Picture Cards

Discussion Questions

- What do you notice about the recreational activities in your group? Are the activities all the same? What are some characteristics of this activity?

Discussion Questions

- What do you notice about the recreational activities in your group? Are the activities all the same? What are some characteristics of this activity?

Discussion Questions

- What do you notice about the recreational activities in your group? Are the activities all the same? What are some characteristics of this activity?

Discussion Questions

- What do you notice about the recreational activities in your group? Are the activities all the same? What are some characteristics of this activity?



Picture Cards



Picture Cards

Discussion Questions

- What do you notice about the recreational activities in your group? Are the activities all the same? What are some characteristics of this activity?

Discussion Questions

- What do you notice about the recreational activities in your group? Are the activities all the same? What are some characteristics of this activity?

