
History of Agriculture

Teacher Read-Aloud

The passage is to be read and discussed by the teacher while students are looking at their copy of the timeline.

In 1862, President Lincoln signed The Homestead Act. This law made it possible for more people to head West and settle on their own land in Wyoming. As long as they stayed on the land for 5 years and made improvements on the land, like building a home and growing crops, they would receive 160 acres for free (Source 3). This allowed many people the opportunity to come to Wyoming and become ranchers and farmers. In 1890, Wyoming became the 44th state in the Union (Source 4). At that time, there were 3,125 farms and ranches in the state.

Some of the first crops grown in Wyoming were corn and oats, first recorded in 1889, and barley, first recorded in 1899. This was followed by wheat, recorded in 1909. Also, in 1909, hay was grown on 548,000 acres with 3,180 ton of hay produced. By 1910, there were more than 11,400 farms and ranches in the state. Alfalfa and dry beans were first recorded in Wyoming in 1919. Sugarbeets were reported in 1924.

In the 1950s, there were 13,100 farms on 36 million acres of land used for crop production. In 2016, over 30 million acres of Wyoming land was being used for agriculture on 11,600 farms. Farms harvested 1,020,000 acres of hay in 2016 (Source 5).

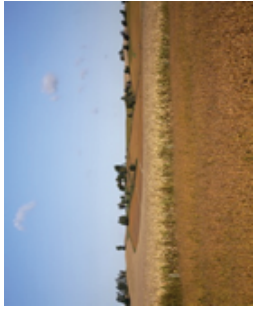


Timeline of Wyoming Crop Production

Corn and oats are first produced in Wyoming.



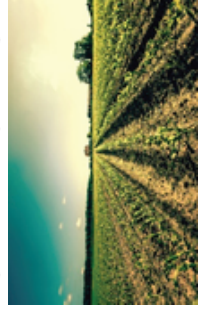
Barley is introduced to crop systems.



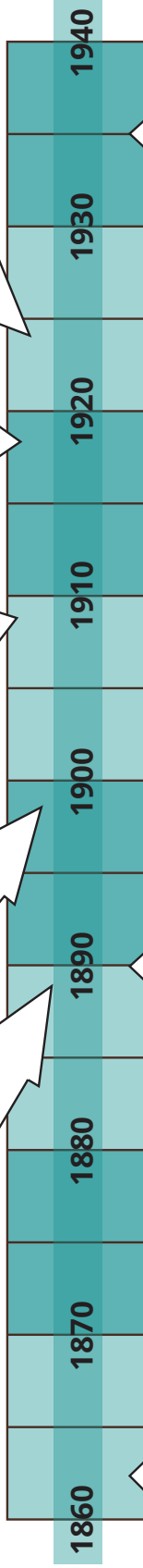
The first wheat and hay are harvested.



Dry beans are being grown in Wyoming.



Sugarbeets are being grown.



Wyoming State Historic Preservation Office

The passage of The Homestead Act encouraged farmers and ranchers to settle in the West.

Wyoming State Historic Preservation Office

When Wyoming became a state, there were more than 3,000 farms and ranches.

Wyoming State Historic Preservation Office

Farming and ranching were at their peak. There were 17,486 farms and ranches in Wyoming.



Today, the number of farms and ranches in Wyoming is decreasing.

Wyoming Bound - Homesteaders

Exit Ticket

What are some ways farmers are stewards?

Wyoming Bound - Homesteaders

Exit Ticket

What are some ways farmers are stewards?

Wyoming Bound - Homesteaders

Exit Ticket

What are some ways farmers are stewards?



