

Winter Wildlife in Wyoming



photo credit: Bill Sincavage

WHERE TO SPOT WINTER WILDLIFE IN WYOMING

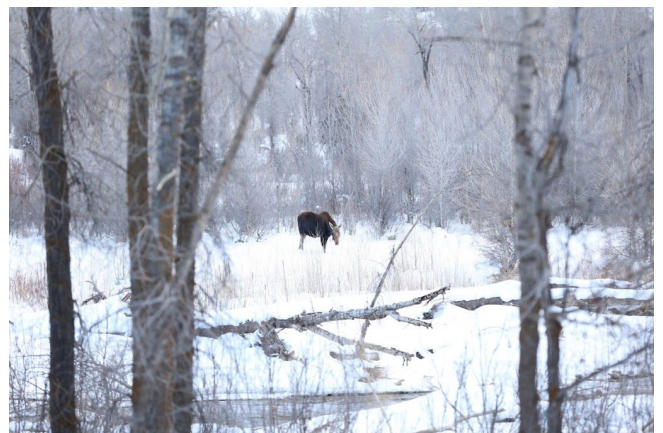
Not all of Wyoming's creatures hibernate in the winter. In fact, winter offers many opportunities to see Wyoming's wildlife through a whole new light. Bison, elk, birds and many more types of wildlife make the snow covered plains and mountains of Wyoming their winter home. Fewer crowds, deep snow and cooler temperatures make winter the best time to see wildlife in Yellowstone National Park and throughout Wyoming. Some animals you might see include pronghorn antelope, bull elk, bald eagles, bighorn sheep, bison and coyotes. Take a look at where you can spot these wild Wyoming residents this winter.

The National Elk Refuge

The National Elk Refuge is a winter sanctuary for Jackson's elk herds and other wild friends such as bison, coyotes, wolves, eagles, ravens and magpies. Bighorn sheep can frequently be seen at Miller Butte within the refuge.

Grand Teton National Park

Antelope Flats is another excellent place to catch a glimpse of wildlife in Grand Teton National Park. Look for bison, deer, elk, moose, antelope, coyotes, foxes and bald eagles. The Gros Ventre River area affords spectacular views of the Tetons and the chance to spot a moose.



Winter Wildlife in Wyoming

Seedskafee National Wildlife Refuge

Located in Sweetwater County, Seedskafee National Wildlife Refuge is a migration corridor for many types of birds, including hawks, finches and trumpeter swans. The refuge is also the winter hangout of rabbits, beavers, porcupines, deer and pronghorn. Because winter can be a rough time for the animals at Seedskafee, a few of the refuge's roads are closed to vehicles in the winter to limit stress to inhabitants. Contact the refuge's headquarters before visiting for more information.

National Bighorn Sheep Interpretive Center

At the National Bighorn Sheep Interpretive Center in Dubois, life-sized dioramas and interactive exhibits tell the story of one of the region's most beloved residents: the Rocky Mountain bighorn sheep. The Whiskey Mountain area just east of Dubois is the stomping ground of the largest wintering sheep herd in North America. For a real treat, call the center to schedule a winter tour of nearby sheep herds. The areas where these majestic animals roam are also home to ancient petroglyph carved by native tribes; see if you can spot ones depicting bighorn sheep.

Casper Mountain

With about 26 miles of groomed trails, the Casper Mountain area attracts snowshoe enthusiasts and cross-country skiers in the winter. The tree-lined trails offer optimum spots to catch roaming mule deer, a variety of birds and pristine views of the valley. The Casper Mountain Trail Center is a great place to warm up and grab a bite to eat.

Will you have a 'Three Dog Day?'

If you're lucky enough to see a fox, wolf and coyote all in one day, that's considered a "Three Dog Day." Documentary filmmaker Ken Burns and his producer/writing partner Dayton Duncan had one during their first winter trip to Yellowstone. The duo toured America's first national park and saw a red fox dive into fresh snow, a pack of wolves make their presence known to a resting herd of bison and a team of coyotes on the side of the roadway. Will you be next?

Article reprinted from Travel Wyoming:

<https://www.travelwyoming.com/article/where-spot-winter-wildlife-wyoming>

